

OWNER'S MANUAL

3 sided Viewing Electric fireplace



AC 220V-240V 50Hz 1400-1600W

MODEL

☐ EF-DEVO36-3SV ☐ EF-DEVO47-3SV ☐ EF-DEVO59-3SV ☐ EF-DEVO71-3SV ☐ EF-DEVO78-3SV

CAUTION

Read and understand this entire owner's manual, including all safety information, **BEFORE** plugging in or using this product. Failure to do so could result in fire, electric shock, or serious personal injury.

Keep this owner's manual for future reference. If you sell or give this product away, make sure this manual accompanies this product.

IMPORTANT SAFETY INFORMATION!

CAUTION

This heater is hot when in use.

Read all instructions before installing or using this heater.

To avoid burns, **DO NOT** let bare skin touch hot surfaces. If provided, use handles when moving this heater. Keep combustible materials, such as furniture, pillows, bedding, papers, clothes, and curtains at least 3 feet (1.0 m) from the front of the heater and keep them away from the sides and rear.

Extreme caution is necessary when any heater is used by or near children or invalids and whenever the heater is left operating and unattended.

DO NOT operate any heater with a damaged cord or plug or after the heater malfunctions, has been dropped or damaged in any manner.

Return to authorized service facility for examination and/or repair.

Indoor use **ONLY**, **DO NOT** use out doors.

This heater is not intended for use in bathrooms, laundry areas and similar indoor locations.

NEVER locate heater where it may fall into a bathtub or other water container.

DO NOT run cord under carpeting.

DO NOT cover cord with throw rugs, runners, or similar coverings. Arrange cord away from traffic area and where it will not be tipped over.

To disconnect heater, turn controls to off, then remove plug from outlet.

DO NOT insert or allow foreign objects to enter any ventilation or exhaust opening as this may cause an electric shock or fire, or damage the heater.

To prevent a possible fire, do not block air intakes or exhaust in any manner. **DO NOT** use on soft surfaces, like a bed, where openings may become blocked.

A heater has hot and arcing or sparking parts inside. **DO NOT** use it in areas where gasoline, or flammable liquids are used or stored.

Use this heater only as describes in this manual. Any other use not recommended by the manufacturer may cause fire, electric shock, or injury to persons.

DANGER-HIGH Temperatures may be generated under certain abnormal conditions. **DO NOT** partially or fully cover or obstruct the front of this heater.

Replacement of the lamps should be done only while the heater is disconnected from the supply circuit.

This appliance is not intended for use by persons (including children) with reduced physical, sensory or capabilities, or lack of experience and knowledge, unless they have been given supervision or instruction concerning use of the appliance by a person responsible for their safety.

Children should be supervised to ensure that they do not play with the appliance.

CAUTION

AVOID FIRE ! Regularly inspect all air vents to make sure they are free from dust, lint, or other blockage. Unplug the unit and clean with a vacuum **ONLY**. **DO NOT** rinse or get wet.

CAUTION

In order to avoid a hazard due to inadvertent resetting of the thermal cut-out, this appliance must not be supplied through an external switching device, such as a timer, or connected to a circuit that is regularly switched on and off by the utility.

SAVE THESE INSTRUCTIONS!

PREPARATION

CAUTION

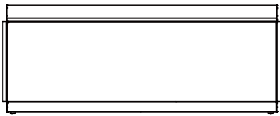


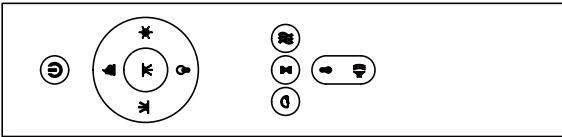
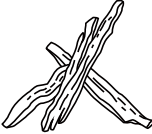

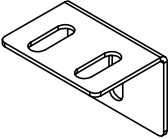
This product includes a **GLASS** panel! Always use extreme caution when handling glass. Failure to do so could result in personal injury or property damage.

Remove all parts and hardware from the carton and place them on a clean, soft, dry surface. Parts and assembly steps are grouped for wall-hanging use. Check the parts list to make sure nothing is missing. Dispose of packaging materials properly. Please recycle whenever possible.

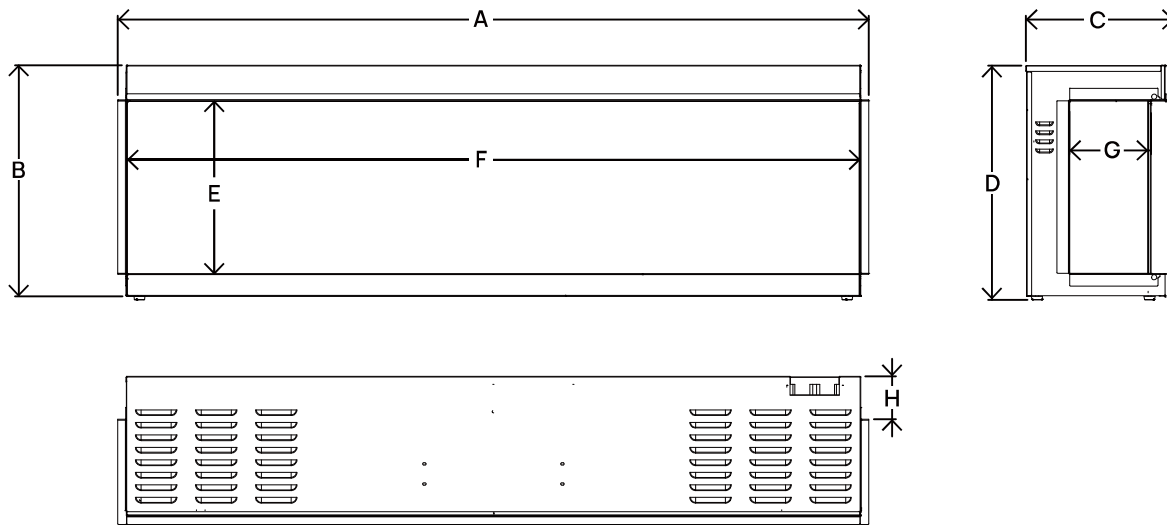
You will need the following tools (not included):

- a. Phillips screwdriver
- b. stud finder
- c. level
- d. tape measure
- e. electric drill
- f. 1/4" wood drill bit
- g. hammer

PARTS & HARDWARE

 A Electric fireplace	 B Screws	 C Drywall anchors
 D Remote Control	 E Logs	 F Smoky Crystals
 G Metal L-Bracket		

SPECIFICATION & DIMENSION



MODEL	A	B	C	D	E	F	G	H
EF-DEVO36-3SV	35.43" 900mm	18.11" 460mm	11.81" 300mm	18.43" 468mm	13.58" 345mm	34.17" 868mm	6.42" 163mm	3.5" 89mm
EF-DEVO47-3SV	47.24" 1200mm	18.11" 460mm	11.81" 300mm	18.43" 468mm	13.58" 345mm	46" 1168mm	6.42" 163mm	3.5" 89mm
EF-DEVO59-3SV	59" 1500mm	18.11" 460mm	11.81" 300mm	18.43" 468mm	13.58" 345mm	57.8" 1468mm	6.42" 163mm	3.5" 89mm
EF-DEVO71-3SV	70.87" 1800mm	18.11" 460mm	11.81" 300mm	18.43" 468mm	13.58" 345mm	69.61" 1768mm	6.42" 163mm	3.5" 89mm
EF-DEVO78-3SV	78.74" 2000mm	18.11" 460mm	11.81" 300mm	18.43" 468mm	13.58" 345mm	77.48" 1968mm	6.42" 163mm	3.5" 89mm

INSTALLATION & ASSEMBLY

Installation

Your appliance is a recessed and/or mantel installed appliance. Select a suitable location that is not susceptible to moisture and is away from drapes, furniture and high traffic areas.

NOTICE

Follow all national and local electrical codes.

⚠ CAUTION

When using paints or varnishes to finish the mantel, make sure they are heat resistant to prevent discoloration.

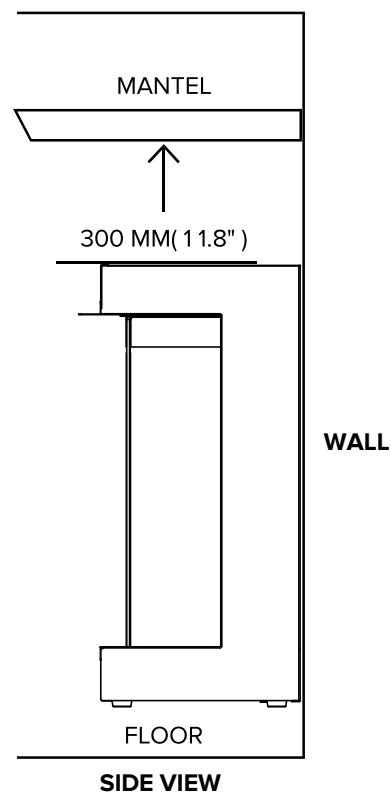
⚠ CAUTION

ALWAYS unplug this fireplace before assembly or cleaning, or before relocating. Failure to do so could result in electric shock, fire, or personal injury.

MINIMUM CLEARANCE TO COMBUSTIBLES

MEASUREMENTS ARE TAKEN FROM THE GLASS FRONT

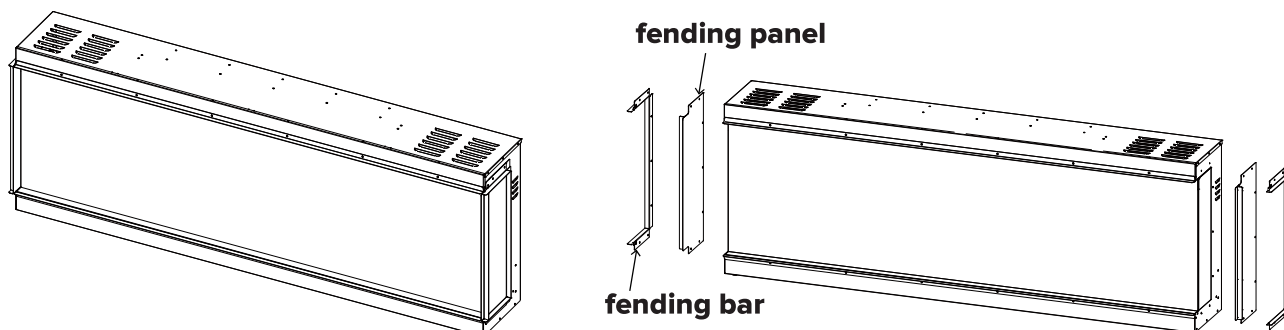
BOTTOM	0 mm (0")	TOP	300 mm (11.8") to mantel
SIDES	0 mm (0")	TOP	300 mm (11.8") to ceiling
BACK	0 mm (0")		



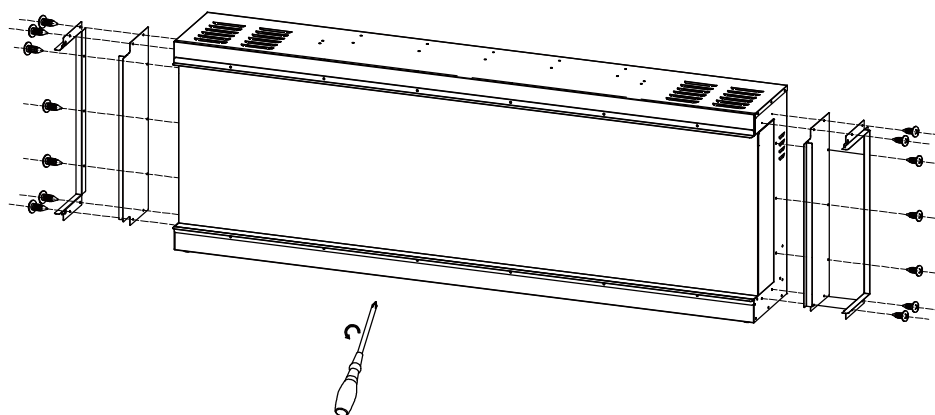
INSTALLATION & ASSEMBLY

Installation for 3 Sided Viewing

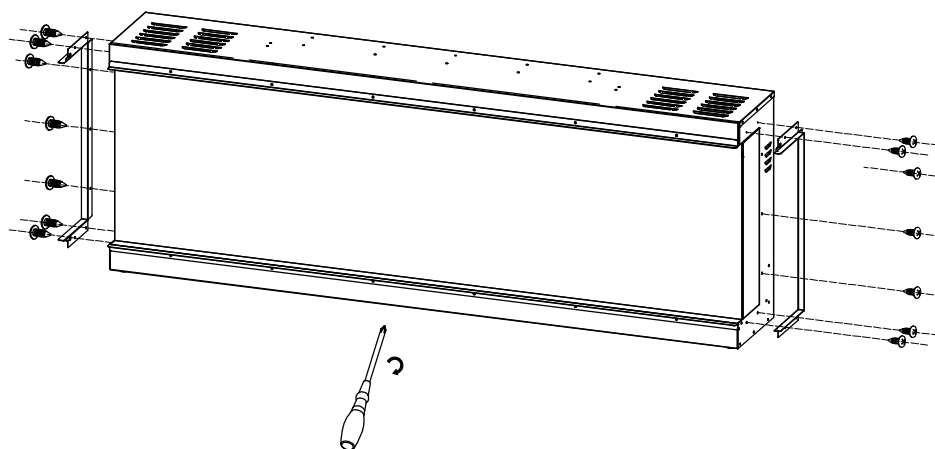
STEP 1: The fireplace is fixed with fending bars and panels on the left and right side.



STEP 2: Take off the fending bars and panels if you want to view the fire from three sides.



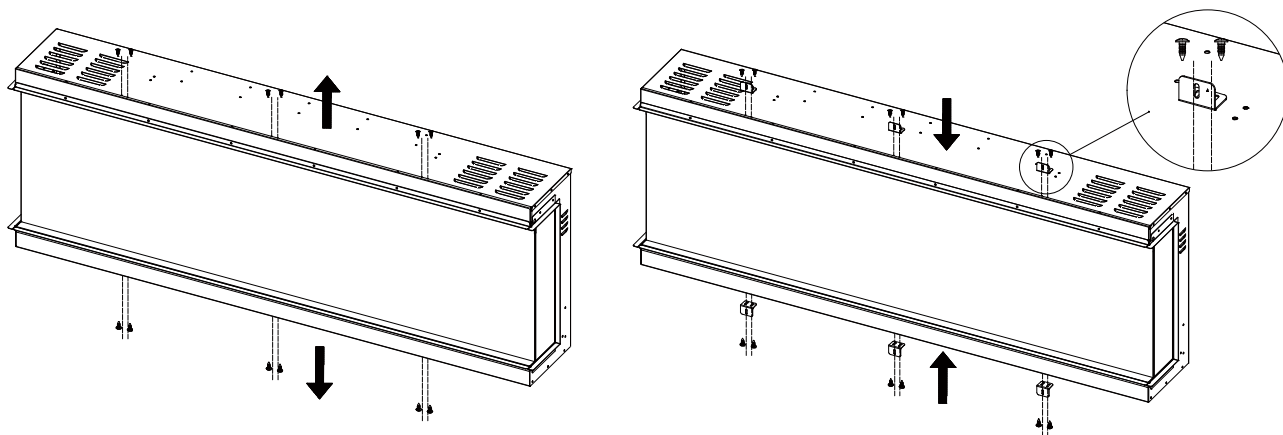
STEP 3: Fix back the fending bars after the panels are removed.



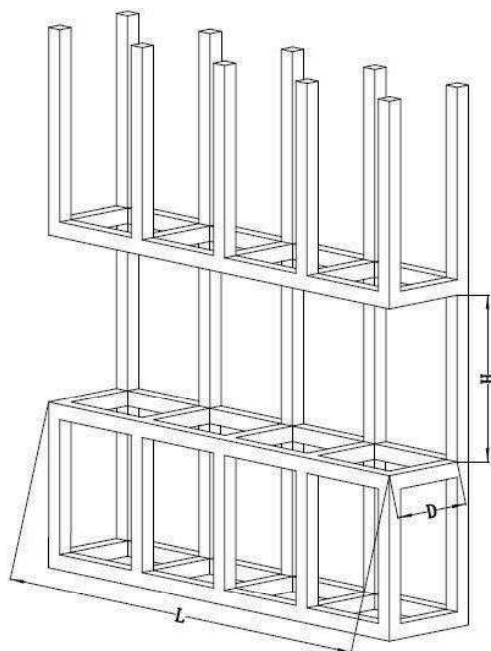
INSTALLATION & ASSEMBLY

STEP 4: Remove the screws from the fireplace as shown in the picture below.

STEP 5: Fix the brackets with the screws in the previous step.



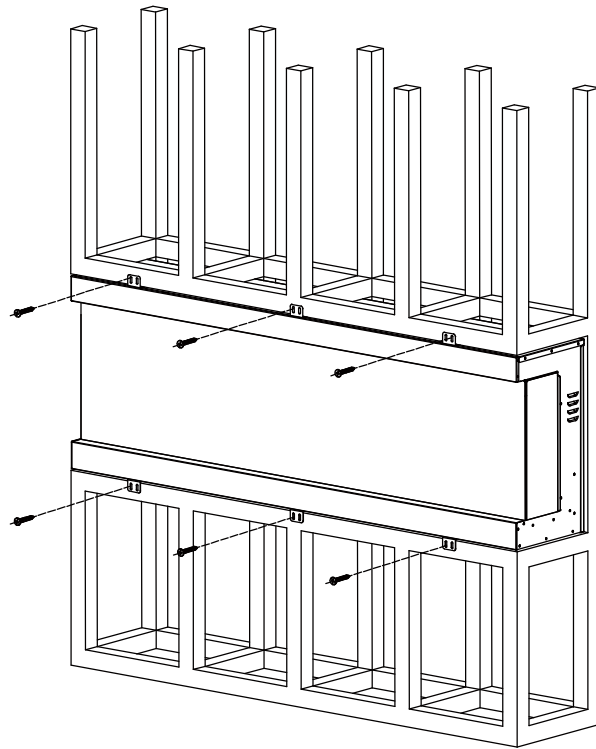
STEP 6: Make an opening for the fireplace according to requested measurement.



MODEL	L	D	H
EF-DEVO36-3SV	34.25" 870mm	11.81" 300mm	18.7" 475mm
EF-DEVO47-3SV	46.06" 1170mm	11.81" 300mm	18.7" 475mm
EF-DEVO59-3SV	57.87" 1470mm	11.81" 300mm	18.7" 475mm
EF-DEVO71-3SV	69.68" 1770mm	11.81" 300mm	18.7" 475mm
EF-DEVO78-3SV	77.56" 1970mm	11.81" 300mm	18.7" 475mm

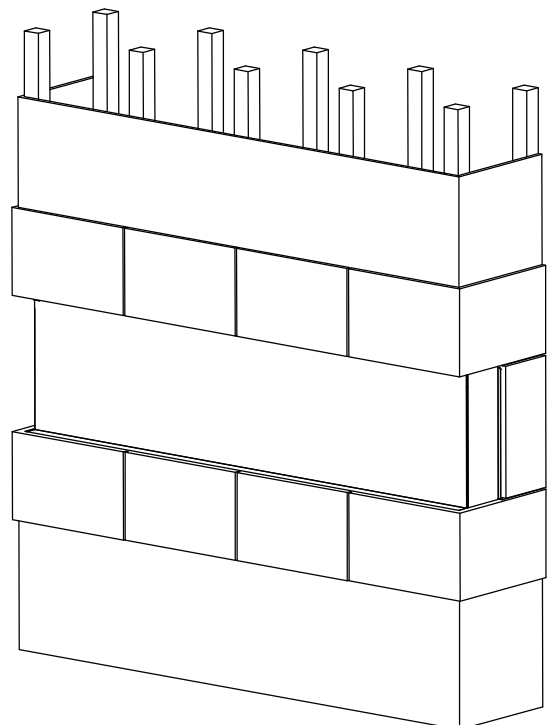
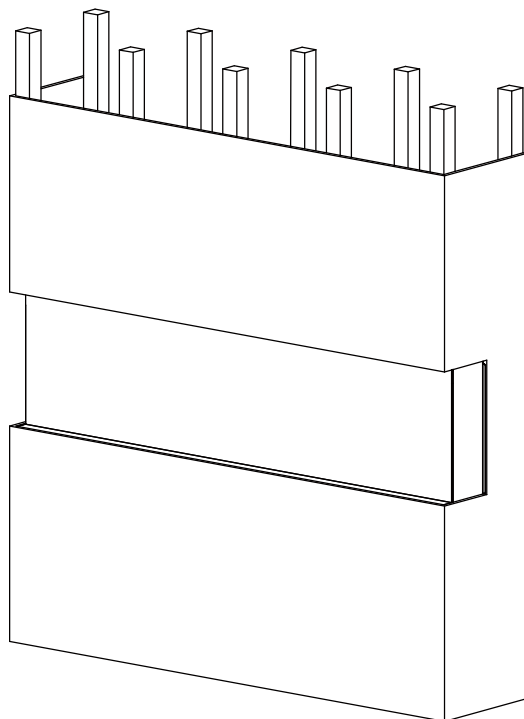
INSTALLATION & ASSEMBLY

STEP 7: Insert the fireplace into the wall opening. Drive the mounting screws into the brackets and the wall studs. Plug in and check if the fireplace works properly. If so, move on to next step.



STEP 8: Cover the glass panel with protective plastic bag and install plywood or drywall.

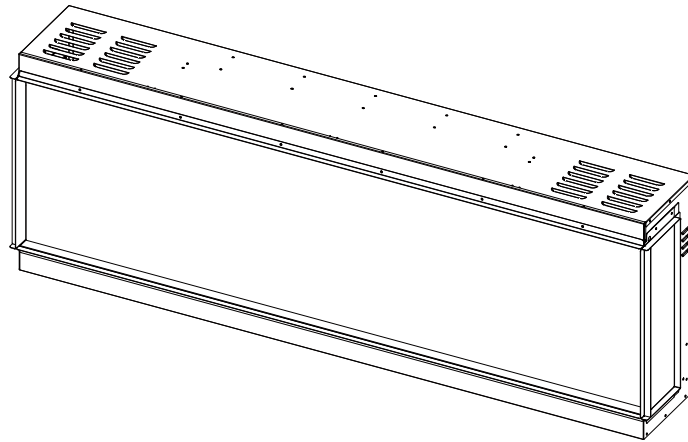
STEP 9: Decorate the plywood or drywall with glazed tile, wallpaper, etc.



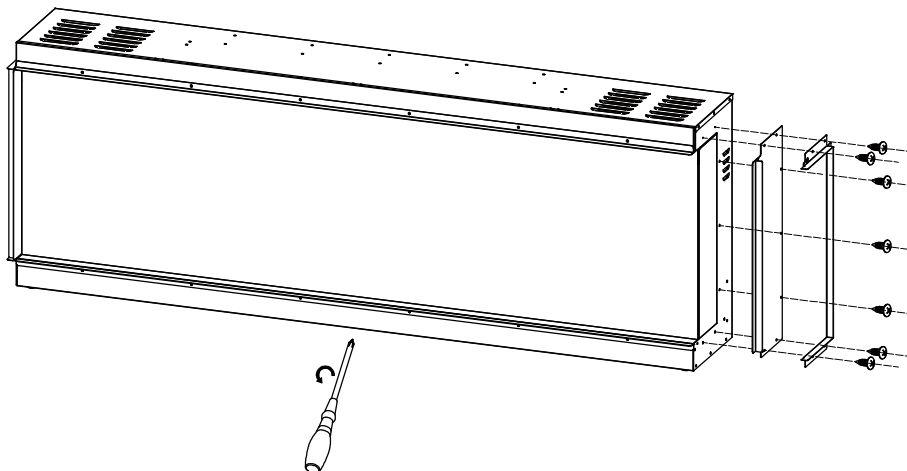
INSTALLATION & ASSEMBLY

Installation for Front and Right Side Viewing

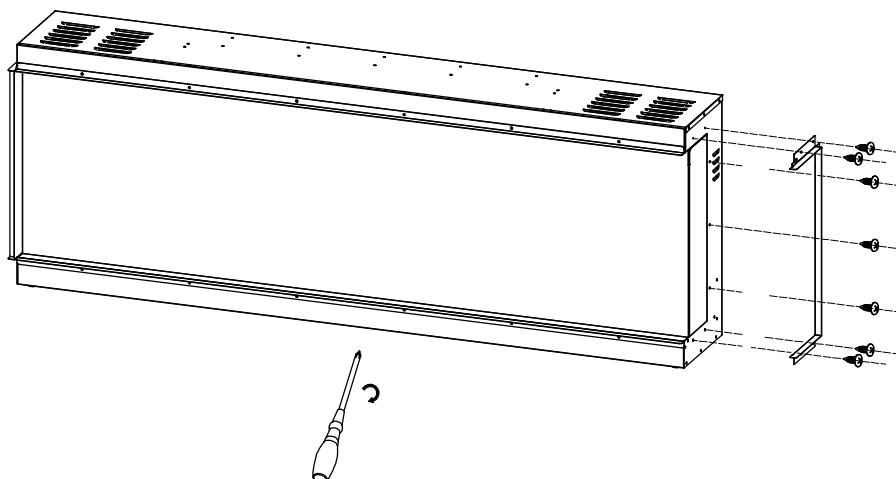
STEP 1: To view the fireplace from front and right side, you need to take off the fending panel on the right side and keep the left side close to a wall.



STEP 2: Remove the 7 screws on the right side. Take off the fending bar and panel.



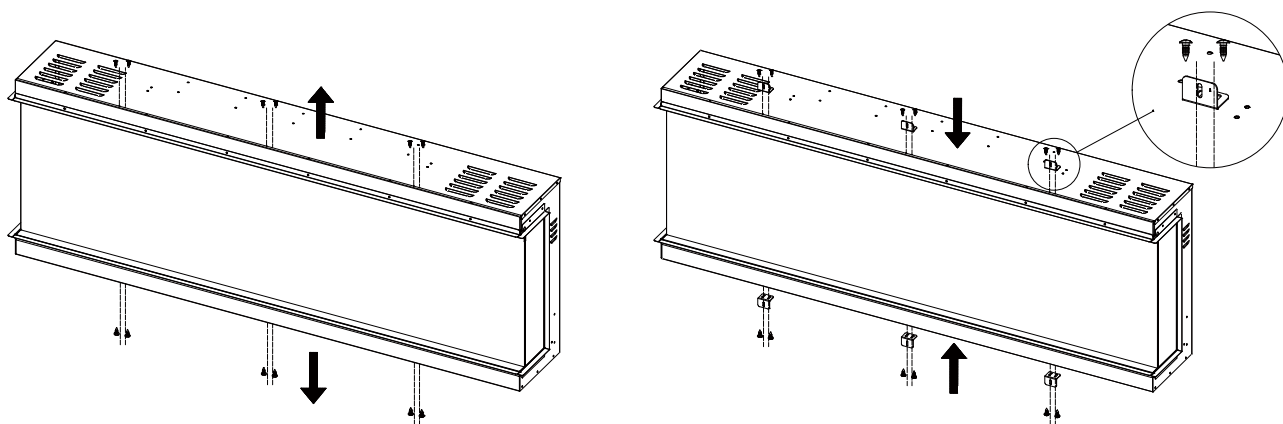
STEP 3: Fix back the fending bar after the panel is removed.



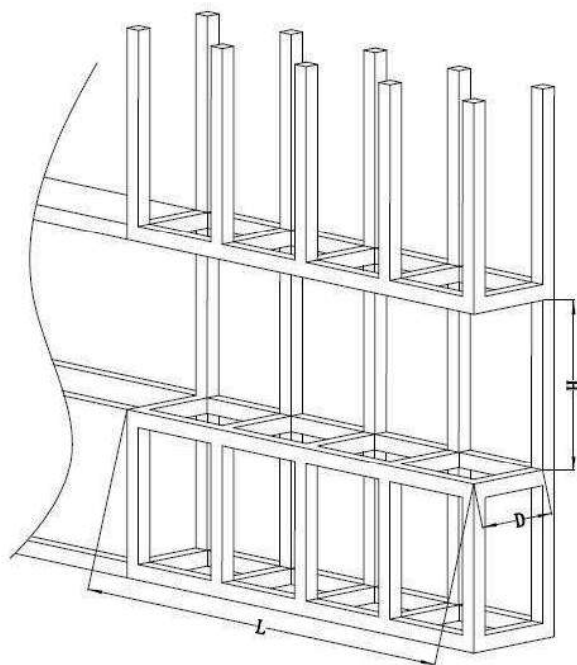
INSTALLATION & ASSEMBLY

STEP 4: Remove the screws from the fireplace as shown in the picture below.

STEP 5: Fix the brackets with the screws in the previous step.



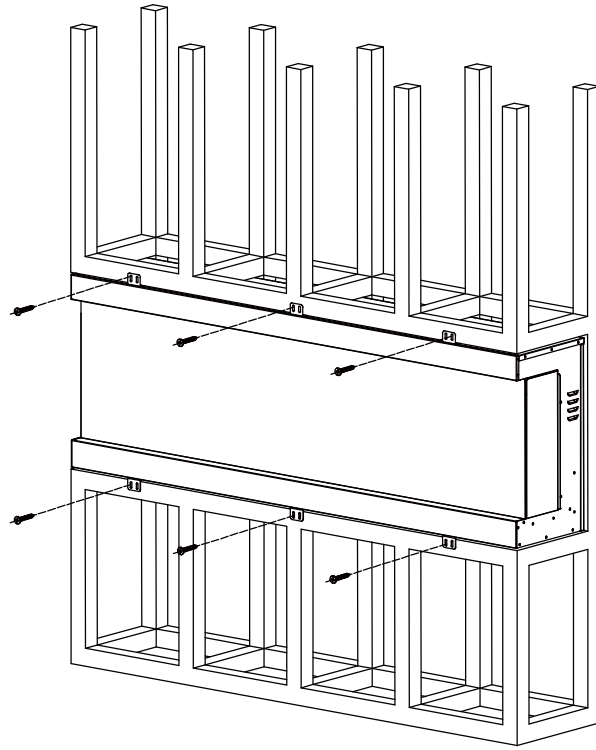
STEP 6: Make an opening for the fireplace according to requested measurement.



MODEL	L	D	H
EF-DEVO36-3SV	34.25" 870mm	11.81" 300mm	18.7" 475mm
EF-DEVO47-3SV	46.06" 1170mm	11.81" 300mm	18.7" 475mm
EF-DEVO59-3SV	57.87" 1470mm	11.81" 300mm	18.7" 475mm
EF-DEVO71-3SV	69.68" 1770mm	11.81" 300mm	18.7" 475mm
EF-DEVO78-3SV	77.56" 1970mm	11.81" 300mm	18.7" 475mm

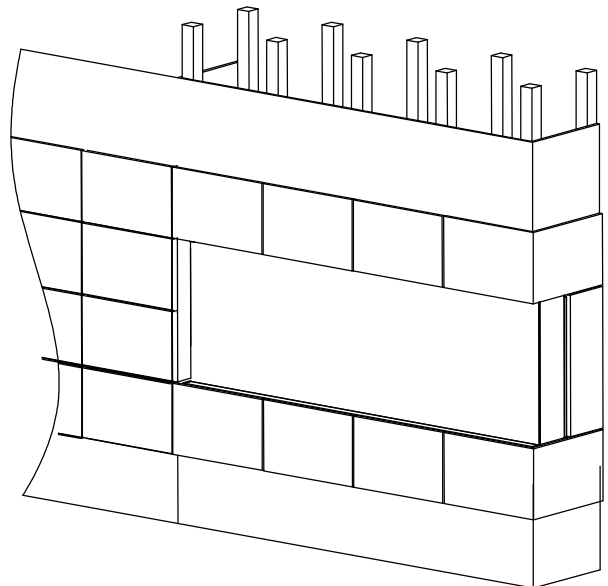
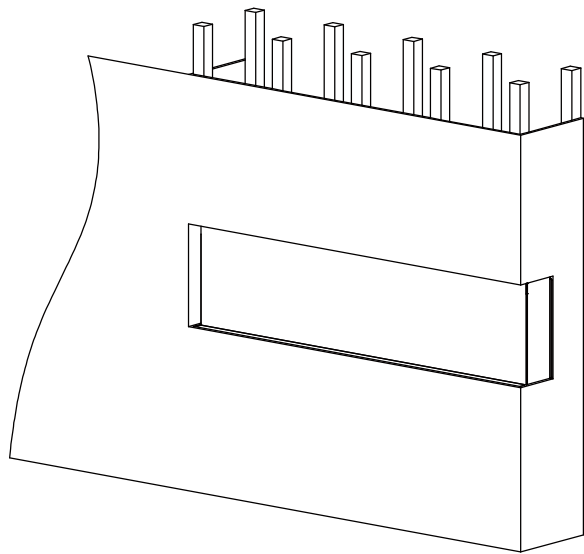
INSTALLATION & ASSEMBLY

STEP 7: Insert the fireplace into the wall opening. Drive the mounting screws into the brackets and the wall studs. Plug in and check if the fireplace works properly. If so, move on to next step.



STEP 8: Cover the glass panel with protective plastic bag and install plywood or drywall.

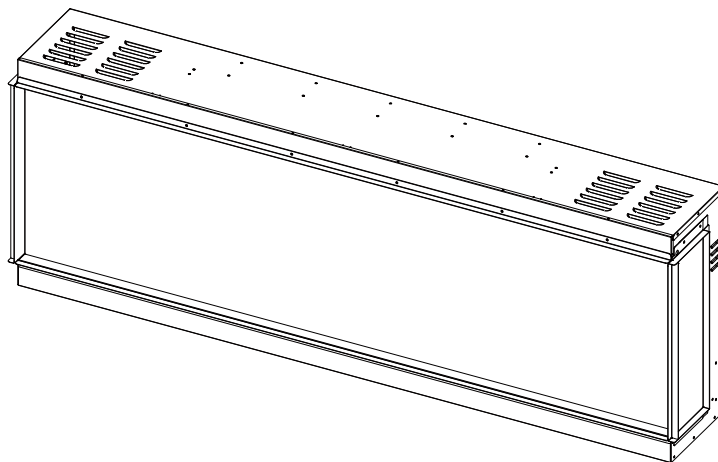
STEP 9: Decorate the plywood or drywall with glazed tile, wallpaper, etc.



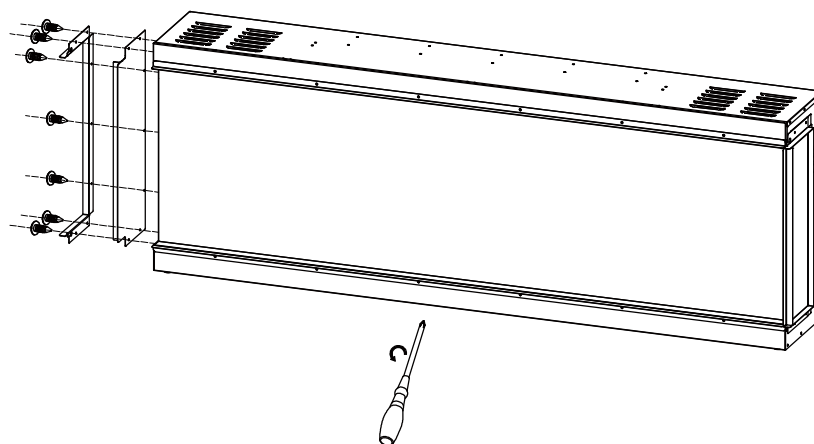
INSTALLATION & ASSEMBLY

Installation for Front and Left Side Viewing

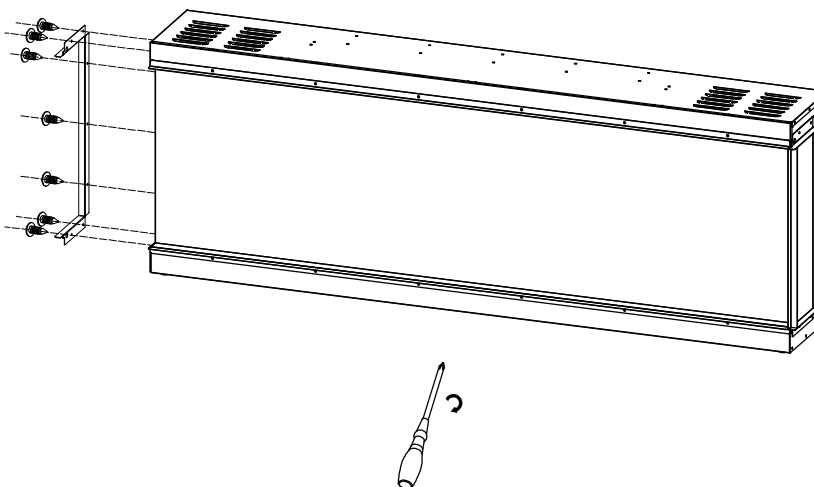
STEP 1: To view the fireplace from front and left side, you need to take off the fending panel on the left side and keep the right side close to a wall.



STEP 2: Remove the 7 screws on the right side. Take off the fending bar and panel.



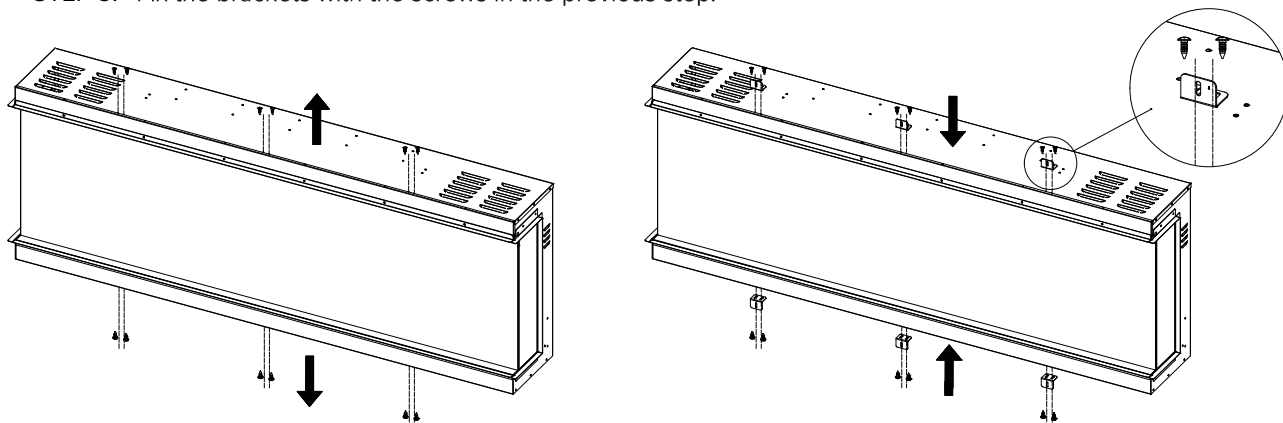
STEP 3: Fix back the fending bar after the panel is removed.



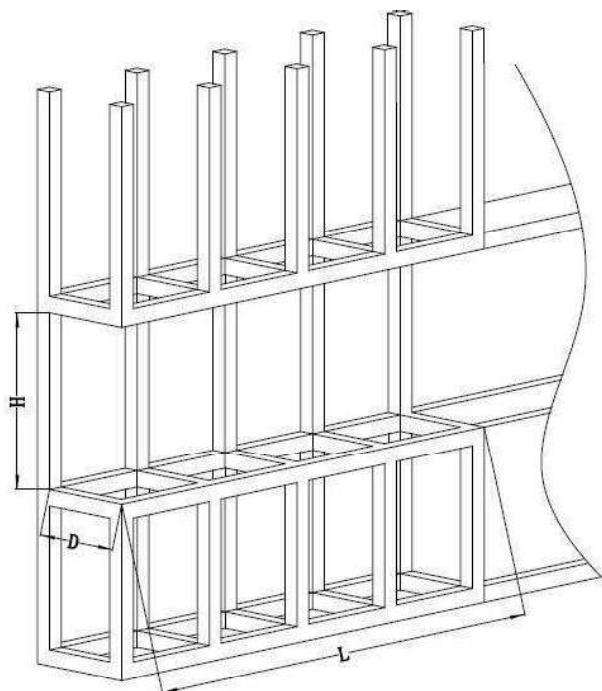
INSTALLATION & ASSEMBLY

STEP 4: Remove the screws from the fireplace as shown in the picture below.

STEP 5: Fix the brackets with the screws in the previous step.



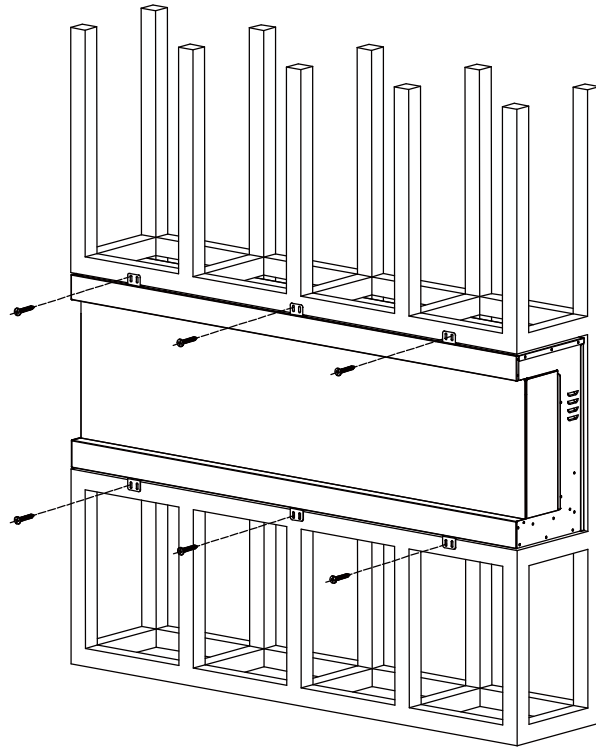
STEP 6: Make an opening for the fireplace according to requested measurement.



MODEL	L	D	H
EF-DEVO36-3SV	34.25" 870mm	11.81" 300mm	18.7" 475mm
EF-DEVO47-3SV	46.06" 1170mm	11.81" 300mm	18.7" 475mm
EF-DEVO59-3SV	57.87" 1470mm	11.81" 300mm	18.7" 475mm
EF-DEVO71-3SV	69.68" 1770mm	11.81" 300mm	18.7" 475mm
EF-DEVO78-3SV	77.56" 1970mm	11.81" 300mm	18.7" 475mm

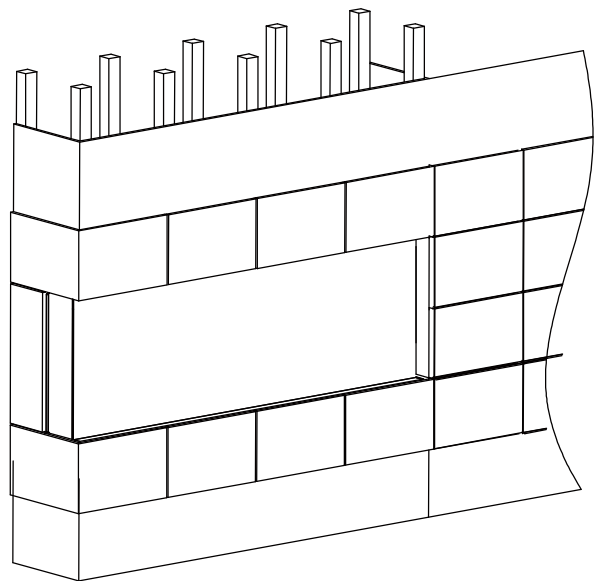
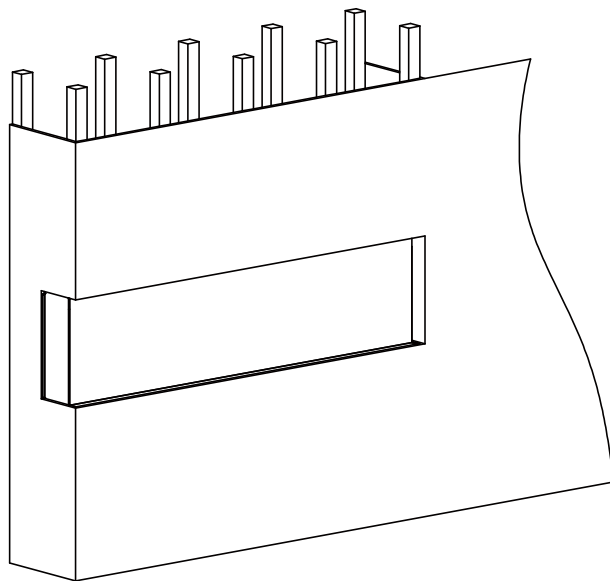
INSTALLATION & ASSEMBLY

STEP 7: Insert the fireplace into the wall opening. Drive the mounting screws into the brackets and the wall studs. Plug in and check if the fireplace works properly. If so, move on to next step.



STEP 8: Cover the glass panel with protective plastic bag before install plywood or drywall.

STEP 9: Decorate the plywood or drywall with glazed tile, wallpaper, etc.



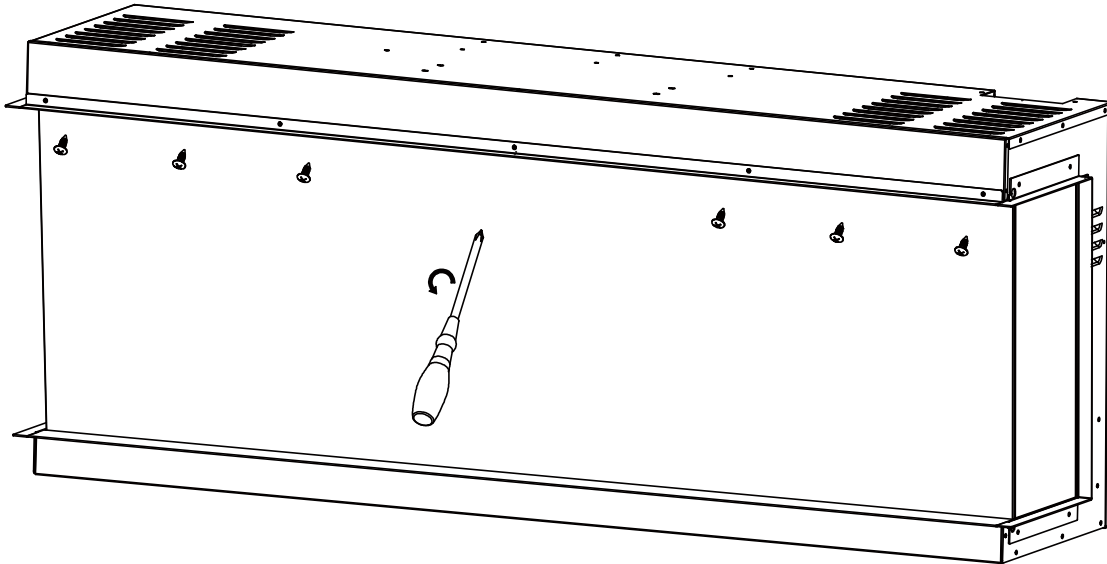
INSTALLATION & ASSEMBLY

Smoky Crystals and Logs Installation

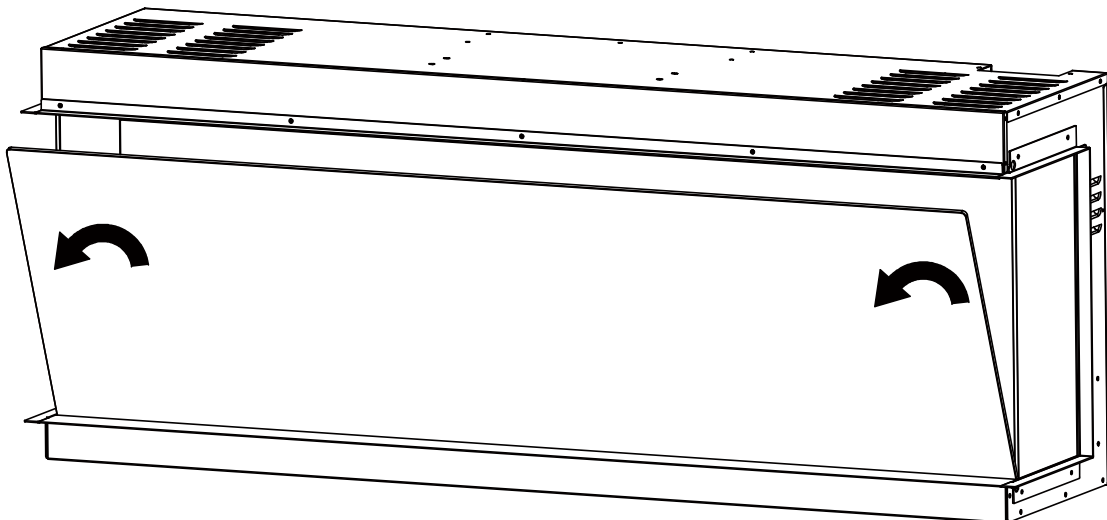
NOTICE

Please install the ember bed media to your preference.

STEP 1: Use a screwdriver to take off the 4 screws.(as shown in diagram)



STEP 2: Have two people take out the glass panel and move it to a clean soft place to avoid scratching.



INSTALLATION & ASSEMBLY

STEP 3: Place the smoky crystals on the media tray. Apply an even layer from side to side.



STEP 4: Carefully place the logs onto the smoky crystals.



STEP 5: After placing the all decorative media, insert the glass panel back and fasten screws.

OPERATION

⚠ CAUTION

Read and understand this entire owner's manual, including all safety information, before plugging in or using this product. Failure to do so could result in electric shock, fire, serious injury, or death.

Power

Plug the power cord into a **220-240 Volt 15 Amp** grounded outlet (see **IMPORTANT SAFETY INFORMATION** on Page 2). Make sure the outlet is in good condition and that the plug is not loose. **NEVER** exceed the maximum maximum amperage for the circuit. **DO NOT** plug other appliances into the same circuit.

NOTICE

When the heater is first turned on, a slight odor may be present. This is normal and should not occur again unless the heater is not used for a long period of time.

To improve operation, aim the remote control at the front of the fireplace. **DO NOT** press the buttons too quickly. Give the unit time to respond to each command.

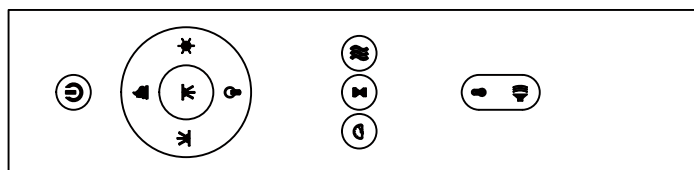
Methods of Operation

This electric fireplace can be operated by the **CONTROL PANEL**, by the battery-powered **REMOTE CONTROL**, or by the **TUYA APP**.

Before operating, please review the **IMPORTANT SAFETY INFORMATION** on Page 2, and heed all warnings.



CONTROL PANEL











REMOTE CONTROL

REMOTE CONTROL / CONTROL PANEL: FUNCTIONS

BUTTON	FUNCTION	ACTION & INDICATION
	ON: Enables control panel functions and remote control. Turns on flame effect. OFF: Disables control panel functions and remote control. Turns off flame effect.	1. Press once. Indicator light turns on. Power turns on. All functions enabled. 2. Press again. Flame effect turns off. Unit goes to standby. All functions turn off.
	COLOR button: Makes the color flame effect changing. NOTE: color effect stays on until power button is turned off. Color flame effect must be on for heater to turn on.	1. Press once. Flame color effect gets changing. 2. Press again. until desired setting is reached. In total with 15 color flames.
	HEATER button: Turns heater on and off. NOTE: The heater only works when the flame effect is on. If the flame effect is off, the heater will not turn on. NOTE: Heater button can be locked or unlocked by holding the Heater button for 5 seconds.	1. Press once. Indicator lights up. Fan blows cool air for 20 seconds. 750W heater turns on and blows warm air. 2. Press again. Indicator lights up. 1500W heater turns on and blows hot air. 3. Press again. Heaters turn off. The fan blows cool air for 30 seconds to allow heater to cool down, then turns off.

REMOTE CONTROL / CONTROL PANEL: FUNCTIONS

BUTTON	FUNCTION	ACTION & INDICATION																																						
	<p>TEMPERATURE button: Changes the temperature settings.</p> <p>1. Press once. Touch panel indicator becomes active.</p> <p>2. Press again. until desired setting is reached. The display shows below settings</p> <table><tr><th>Display Value</th><th>NO</th><th>1</th><th>2</th><th>3</th><th>4</th><th>5</th><th>6</th><th>7</th><th>8</th><th>9</th><th>10</th><th>11</th></tr><tr><th rowspan="2">Temperature</th><th>°C</th><td>20</td><td>21</td><td>22</td><td>23</td><td>24</td><td>25</td><td>26</td><td>27</td><td>28</td><td>29</td><td>30</td></tr><tr><th>°F</th><td>68</td><td>70</td><td>72</td><td>74</td><td>76</td><td>78</td><td>80</td><td>82</td><td>84</td><td>86</td><td>88</td></tr></table> <p>NOTE: Press the button for 5 seconds to switch between °C and °F.</p>	Display Value	NO	1	2	3	4	5	6	7	8	9	10	11	Temperature	°C	20	21	22	23	24	25	26	27	28	29	30	°F	68	70	72	74	76	78	80	82	84	86	88	
Display Value	NO	1	2	3	4	5	6	7	8	9	10	11																												
Temperature	°C	20	21	22	23	24	25	26	27	28	29	30																												
	°F	68	70	72	74	76	78	80	82	84	86	88																												
	<p>TIMER button: Controls timer settings to turn off fireplace at selected time.</p> <p>Settings range from 0.5 hour to 8 hours.</p>	<p>1. Press once. Indicator light turns on. Timer defaults to 0.5 hour.</p> <p>2. Press again. until desired setting is reached. Indicator lights show setting.</p>																																						
	<p>FLAME SPEED button: Controls the speed of the flame. There are 3 flame speed settings: 01 (slow), 02 (medium), 03 (fast).</p>	<p>1. Press once. Flame speed gets changing.</p> <p>2. Press again. until desired setting is reached. Display shows the setting. The Default setting is 02 (medium speed)</p>																																						
	<p>FLAME BRIGHTNESS button: Makes flame dimmer and brighter.</p>	<p>1. Press once. Flame brightness is enabled.</p> <p>2. Press again. until desired setting is reached.</p>																																						
	<p>EMBER BED LIGHTS button: Turns on media bed and changes color.</p> <p>NOTE: This fireplace has memory function for ember bed lighting.</p>	<p>1. Press once. Ember bed turns on.</p> <p>2. Press again. until desired setting is reached. There is a total of 15 ember bed colors.</p>																																						
	<p>EMBER BED BRIGHTNESS button: Makes media bed dimmer and brighter.</p>	<p>1. Press once. Brightness becomes active.</p> <p>2. Press again. until desired setting is reached. There is a total of 4 brightness levels and 1 pulsating level.</p>																																						
	<p>DOWN LIGHT button: Turns on the LED down light and changes color.</p> <p>NOTE: This fireplace has memory function for the down light.</p>	<p>1. Press once. LED down light is powered on.</p> <p>2. Press again. until desired setting is reached. There is a total of 15 down light colors.</p>																																						
	<p>CRACKLING SOUND button: Makes cracking sound low or high.</p>	<p>1. Press once. Crackling sound is enabled.</p> <p>2. Press again. until desired setting is reached.</p>																																						

TEMPERATURE LIMITING CONTROL

NOTICE

This heater is equipped with a Temperature Limiting Control. Should the heater reach an unsafe temperature, the heater will automatically turn OFF.

TO RESET

1. Turn the ON/OFF switch on the CONTROL PANEL to OFF. Wait 5 minutes.
2. Unplug the power cord from the outlet.
3. Inspect the fireplace to make sure no vents are blocked or clogged with dust or lint. If they are, use a vacuum to clean the vent areas.
4. With the POWER switch in the OFF position, plug the power cord back into the outlet.
5. If the problem continues, have your outlet and wiring inspected by a professional.

REMOTE CONTROL BATTERY INFORMATION

The remote control uses two AAA batteries (not included).

CAUTION

NEVER dispose of batteries in fire.

Failure to observe this precaution may result in an explosion. Dispose of batteries at your local hazardous material processing center.

CARE & MAINTENANCE

Cleaning

CAUTION

ALWAYS turn the heater **OFF** and unplug the power cord from the outlet before cleaning, performing maintenance, or moving this fireplace. Failure to do so could result in **electric shock, fire, or personal injury**.

NEVER immerse in water or spray with water. Doing so could result in **electric shock, fire, or personal injury**.

Metal:

Buff using a soft cloth, slightly dampened with a citrus oil-based product.

DO NOT use brass polish or household cleaners as these products will damage the metal trim.

Glass:

Use a good quality glass cleaner sprayed onto a cloth or towel. Dry thoroughly with a paper towel or lint-free cloth.

NEVER use abrasive cleansers, liquid sprays, or any cleaner that could scratch the surface.

Vents:

Use a vacuum or duster to remove dust and dirt from the heater and vent areas.

Plastic:

Wipe gently with a slightly damp cloth and a mild solution of dish soap and warm water.

NEVER use abrasive cleansers, liquid sprays, or any cleaner that could scratch the surface.

Maintenance

CAUTION

Risk of electric shock! DO NOT OPEN any panels ! No user-serviceable parts inside!

ALWAYS turn the heater **OFF** and unplug the power cord from the outlet before cleaning, performing maintenance, or moving this fireplace. Failure to do so could result in electric shock, fire, or personal injury.

Electrical and Moving Parts:

The fan motors are lubricated at the factory and will not require lubrication.

Electrical components are integrated in the fireplace and are not serviceable by the consumer.

Storage:

Store heater in a clean dry place when not in use.

CAUTION

NO SERVICING of the internal or electrical parts should be performed by the consumer. Do not service the unit yourself.

APP CONNECTION INSTRUCTIONS

1. App download

- Download "Tuya Smart" from the app store.
- Scan the QR code.
- Turn on the "GPS" from your mobile device.



NOTICE

make sure your mobile phone is well connected to the nearest WIFI signal.

2. Login

- Register with your email ID or Mobile phone number as the user name.
- Setup your account password.

<

Register

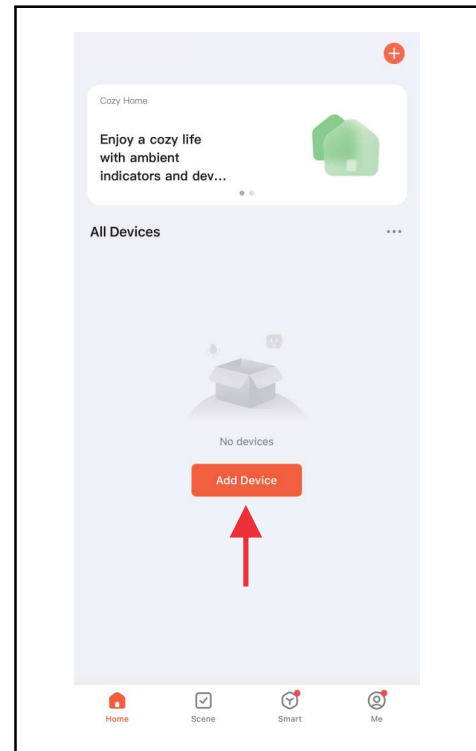
Mobile Number/Email

☐ I Agree [Privacy Policy](#) [User Agreement](#)
[Children's Privacy Statement](#) and
[Third Party Information Sharing List](#)

Get Verification Code

3. Add device

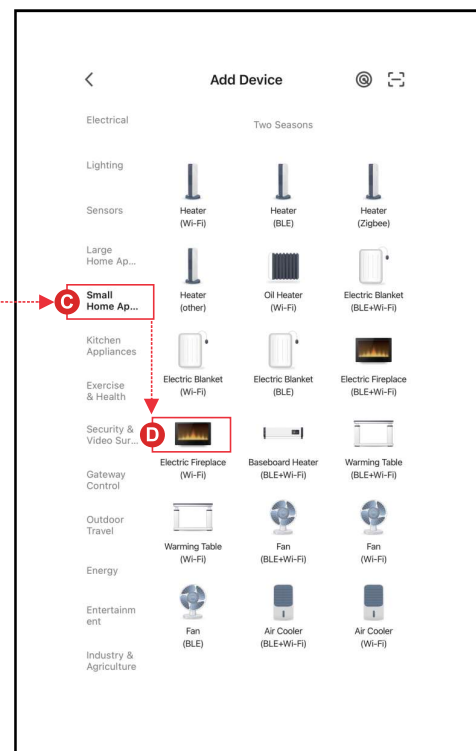
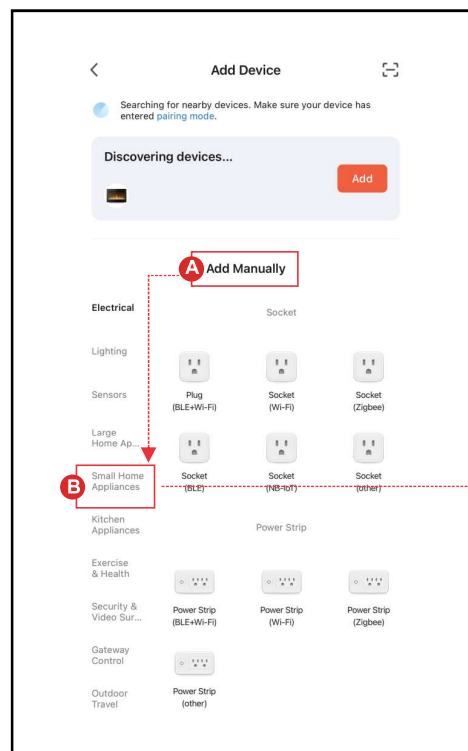
After account is created, log into account and select the "Add Device" button.



3. Add device - Continued

There are three methods to add your Electric Fireplace.

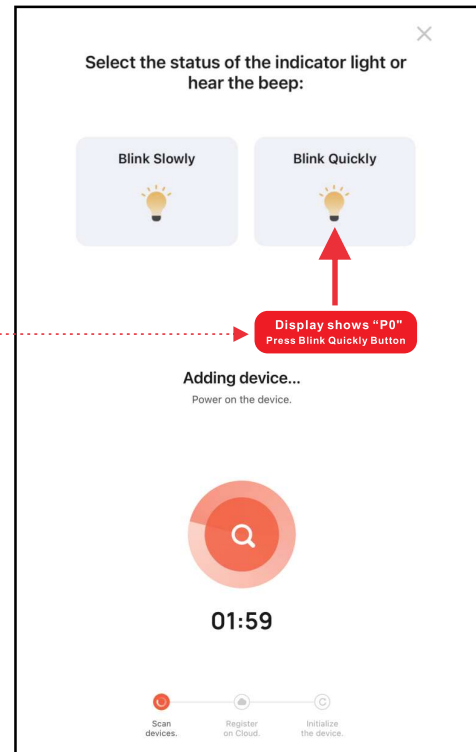
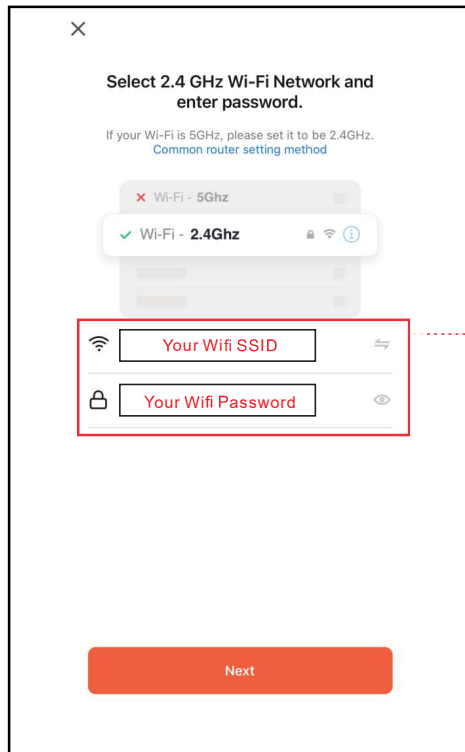
- Method 1: Add Manually on "P0" mode. Please follow below steps A,B,C,D.
- Method 2: Add Manually on "P1" mode. Please follow below steps A,B,C,D.
- Method 3: Add by Bluetooth. Open Bluetooth on your mobile phone before adding.



APP CONNECTION INSTRUCTIONS

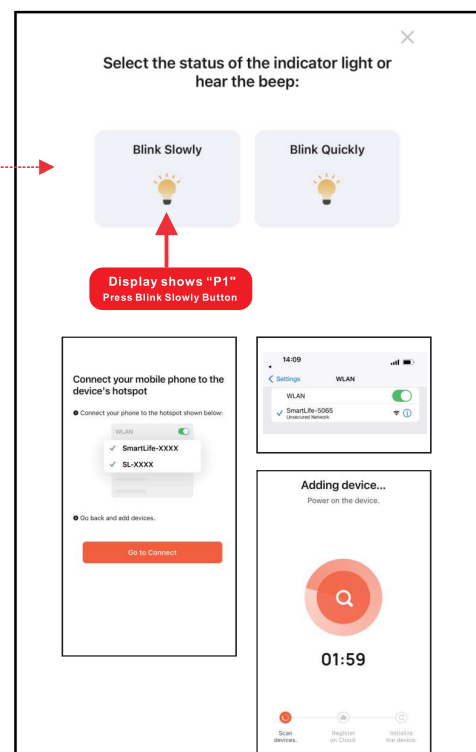
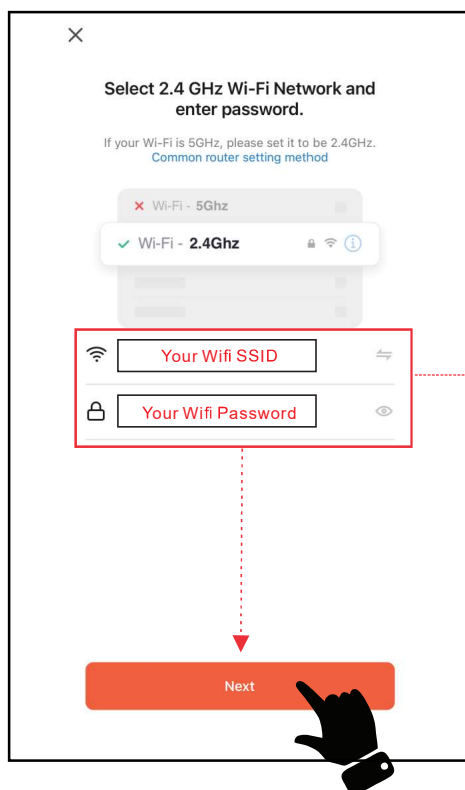
4. Connecting method 1 - (P0)

- Press & hold (⏻) from remote control or control panel until display on panel shows “P0”.
- Enter the WIFI name and password, then press “Next” button for pairing.
- Press the **Blink Quickly** button for “P0”, device being added.
- When complete, display on control panel shows “P4”, LED Ember-light shows **GREEN** color and flashes 6 times.



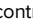
4. Connecting method 2 - (P1)

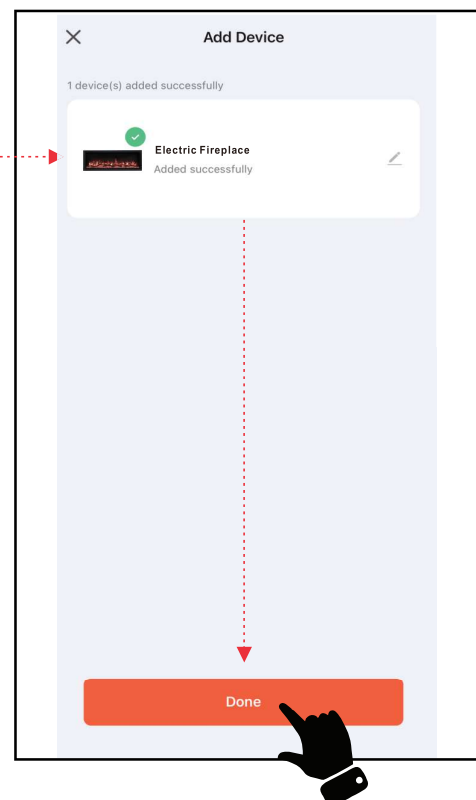
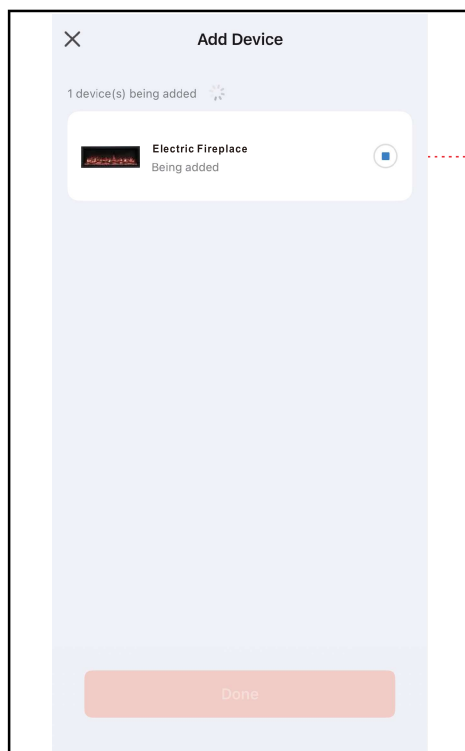
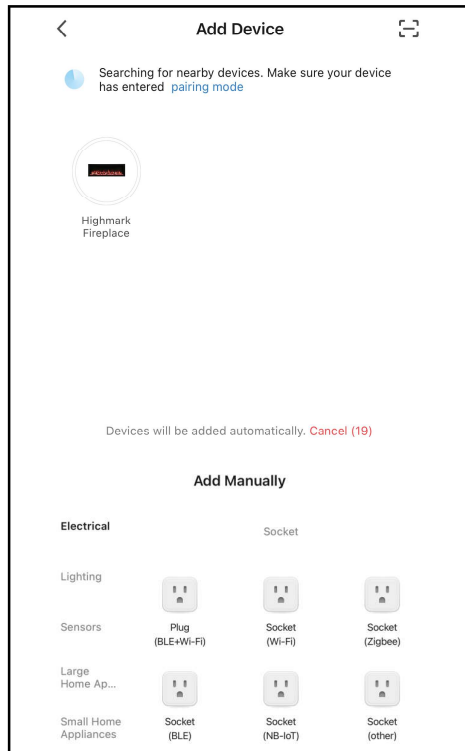
- Press & hold (⏻) from remote control or control panel until display on control panel shows “P1”.
- Enter the WIFI name and password, then press “Next” button for pairing.
- Press the **Blink Slowly** button for “P1”, Then go to connect your mobile phone to the device's hotspot.
- Select device's hotspot (**SmartLife-xxxx**), then back to device. Device being added.
- When complete, display on control panel shows “P4”, LED Ember-light shows **GREEN** color and flashes 6 times.



APP CONNECTION INSTRUCTIONS

4. Connecting method 3 - (Bluetooth)

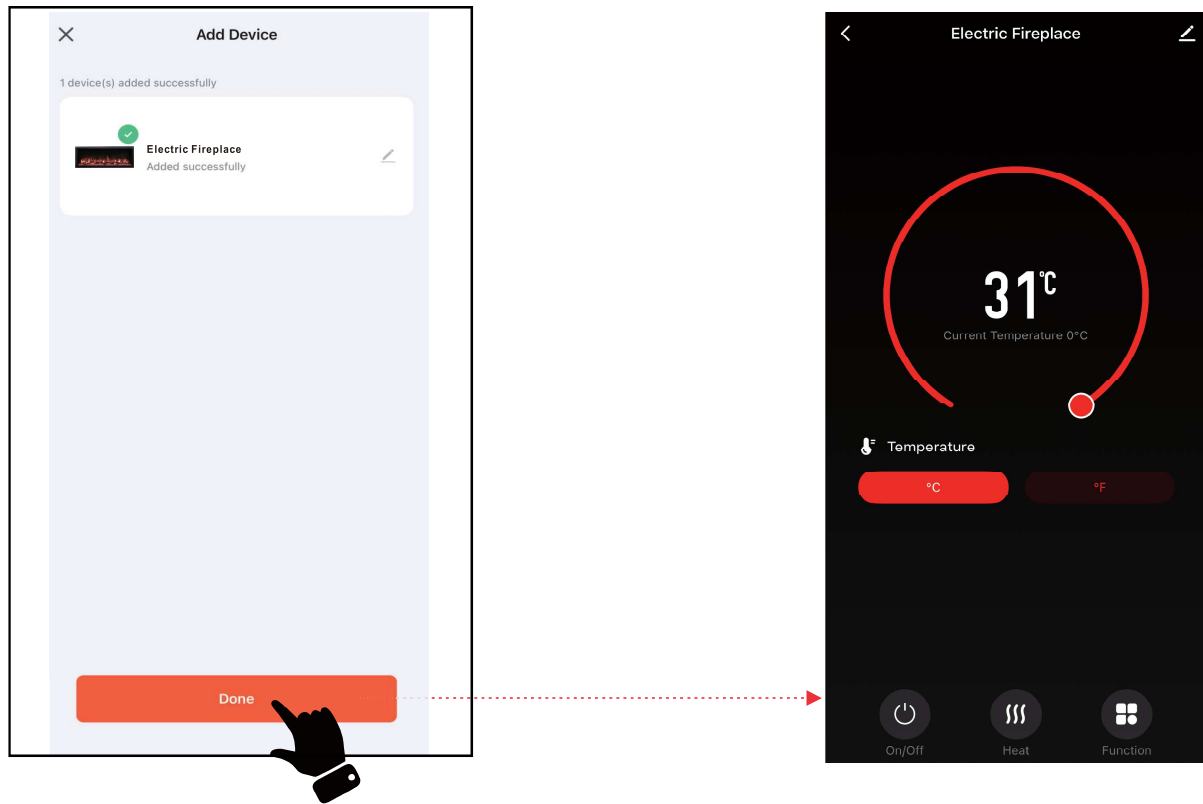
- Press & hold  from remote control or control panel until display on control panel shows “P0”.
- Press the **Add** button when you see the device named “**Electric Fireplace**”.
- Enter the WIFI name and password, then press “**Next**” button for pairing.
- When complete, display on control panel shows “**P4**”, LED Ember-light shows **GREEN** color and flashes 6 times.



APP CONNECTION INSTRUCTIONS

5. Complete

- Press **Done** to complete.



APP Operating Instruction

